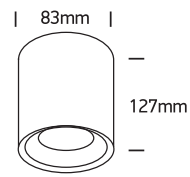


# INSTALLATION MANUAL

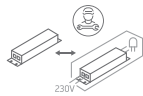
67516A

**ecolight**



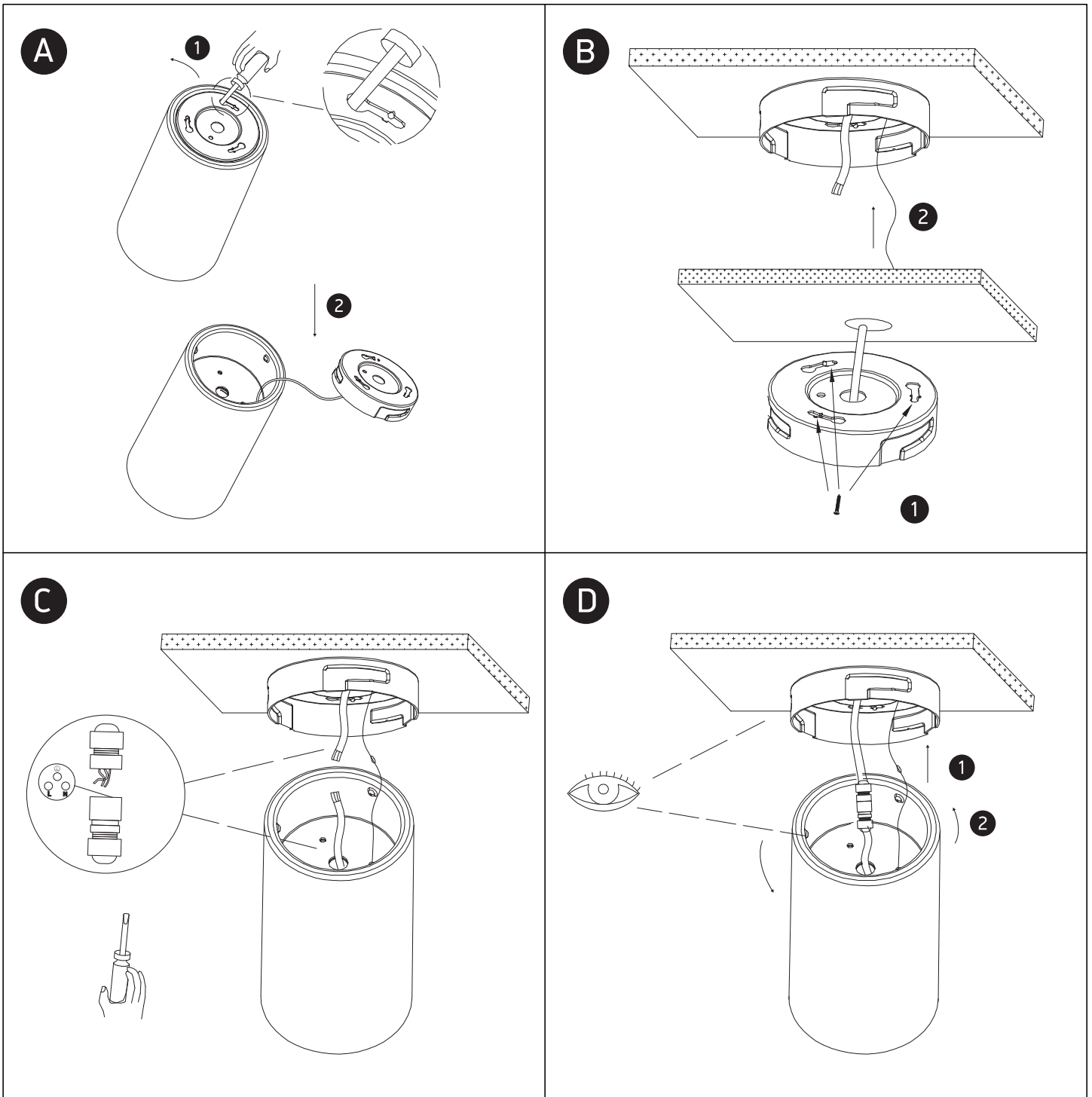
230V | COB LED | 15W | IP65 | Aluminium

Complete with 350mA driver.



90  
CRI

**one**  
LIGHT



## Warnings:

1. Make sure that the product is installed properly before connecting to electricity.
2. Do not cover the fitting.
3. Maintenance and installation should only be carried out by a professional electrician.