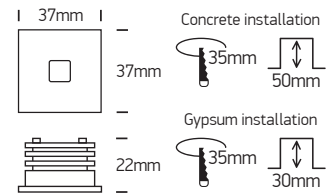


INSTALLATION MANUAL

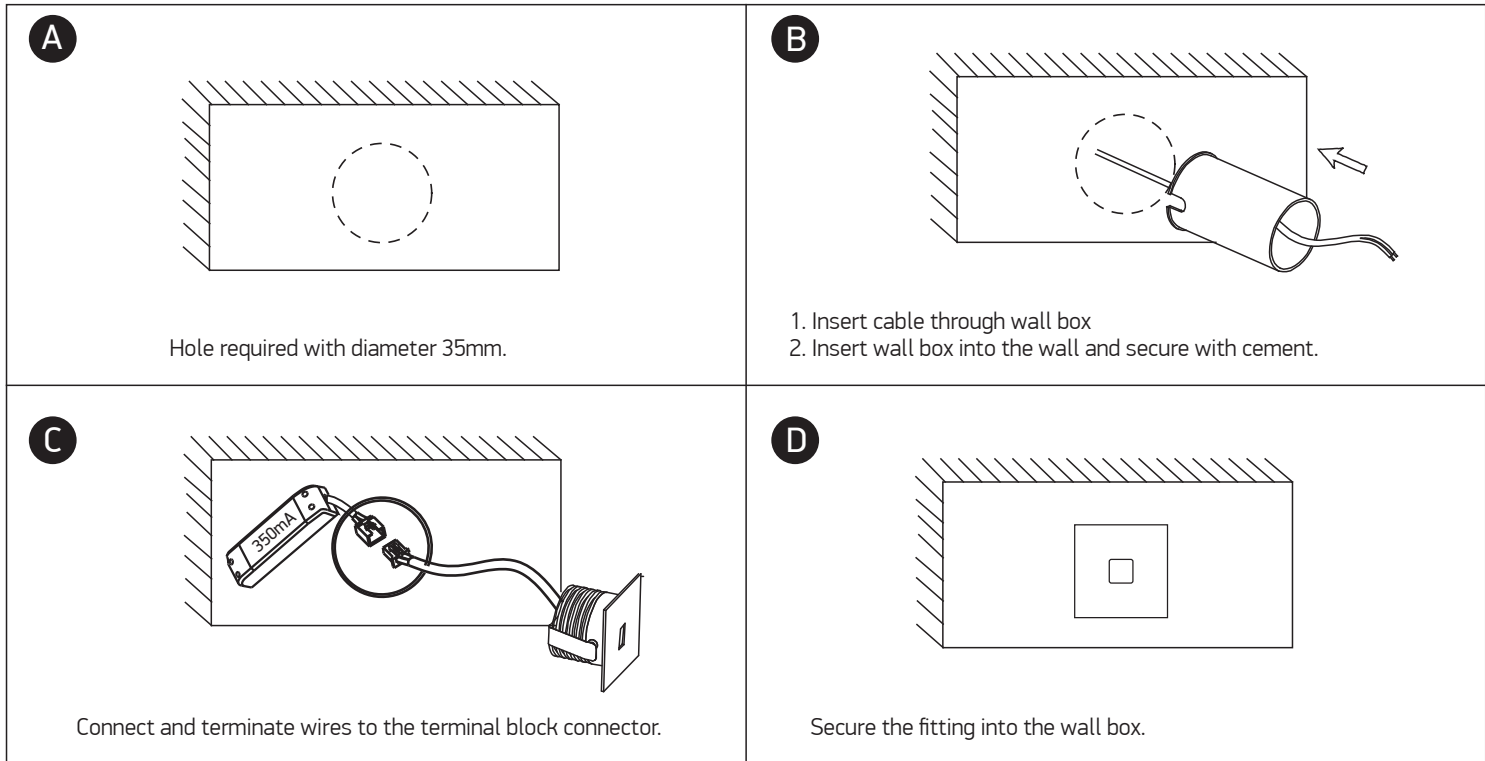
68004A



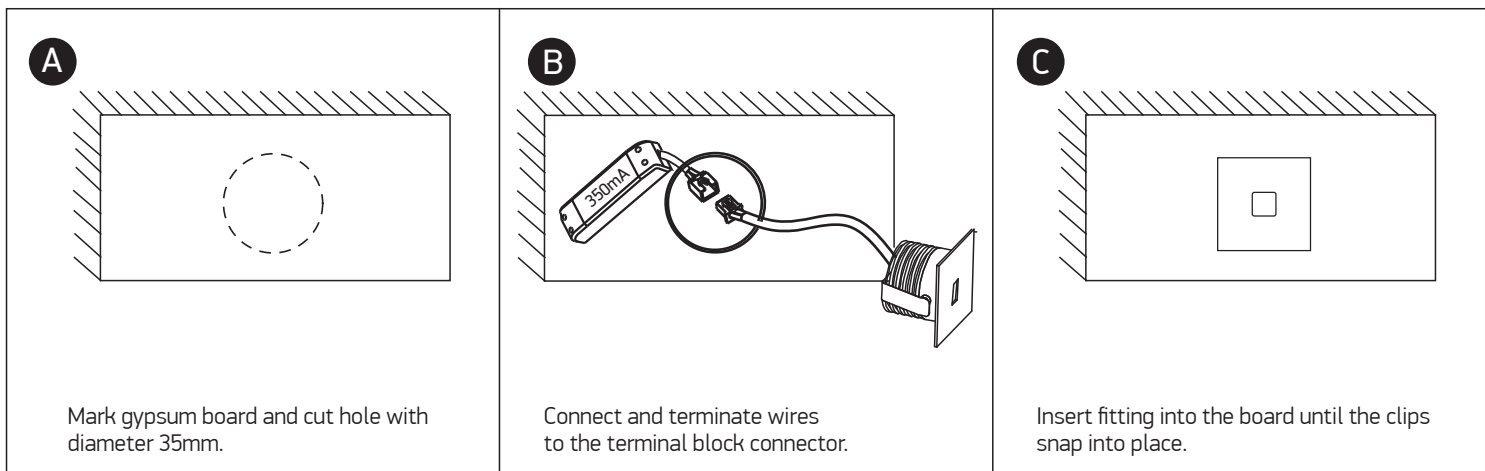
350mA | 1W | IP54 | Aluminium | Recessed
Requires 350mA driver / Supplied with box for concrete installation.



FOR CONCRETE INSTALLATION



FOR GYPSUM INSTALLATION



Warnings:

1. Make sure that the product is installed properly before connecting to electricity.
2. Do not cover the fitting.
3. Maintenance and installation should only be carried out by a professional electrician.