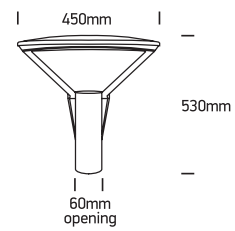


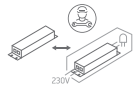
INSTALLATION MANUAL

70112

ecolight

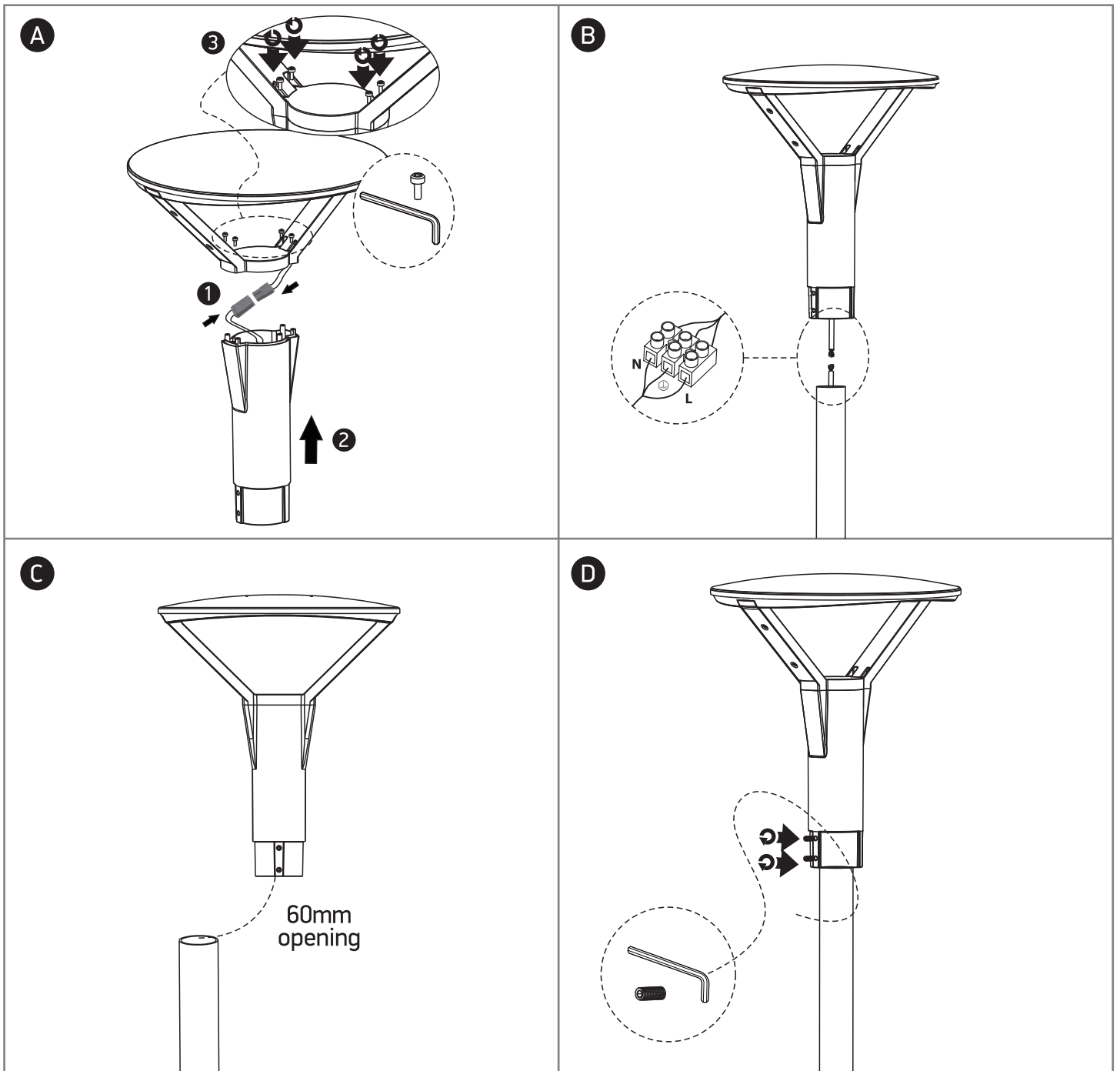


100-240V | LED | 75W | IP66 | Die cast
Complete with 2400mA driver.



80 CRI

one
LIGHT



Warnings:

1. Make sure that the product is installed properly before connecting to electricity.
2. Do not cover the fitting.
3. Maintenance and installation should only be carried out by a professional electrician.