

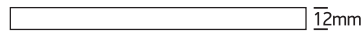
# INSTALLATION MANUAL

7864

ecostrip |  | Requires 7864P power supply.  
Supplied in 50m roll.  
Cut every 1m.

230V | SMD 2835 | 120LEDs/m | 9W/m | IP65 | PVC

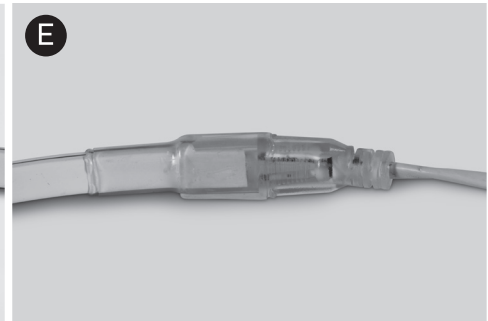
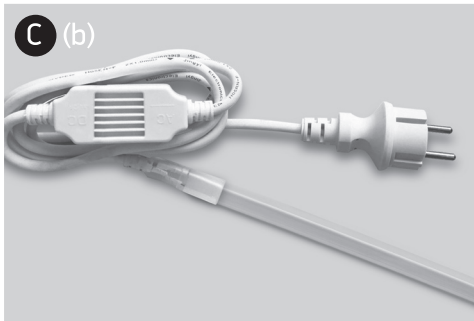
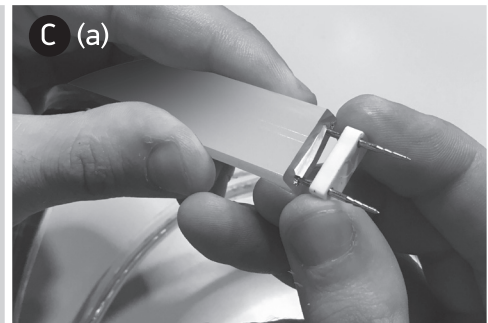
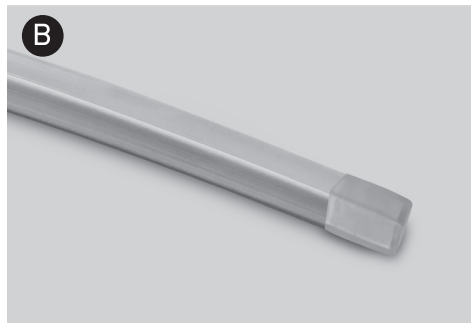
 8mm

 12mm

one  
LIGHT

## INSTALLATION:

- The LED strip can be cut every 1m at the clearly marked positions. Cut carefully at the desired length by using a sharp pair of scissors.
- To seal the non-powered end of the LED strip, use the 7864E end cap.
- Install the 2-pin male connector to the LED strip and connect it to the 7864P power supply. Plug the power supply into the AC outlet.
- To connect two LED strips together use the 7864C connector.
- To seal all connections use the shrinking sleeve to secure the LED strip.
- Use the 7864F fixing clip to secure the LED strip into the required position.



## Warnings:

- The mounting surface must be clean, dry and free from dust or grease.
- Make sure that the product is installed properly before connecting to electricity.
- Do not bend, fold or twist the LED strip.
- Do not bend to install in corners.
- Do not put excessive pressure on surface of LED strip.
- Do not cover LED strip with any materials.
- Do not install in ambient temperatures below -10°C or exceeding 45°C.
- Always handle the LED strip with care.
- The LED strip should not be exposed to direct sunlight.
- LED strips with different batch numbers may have slight variations in colour consistency (CCT±150K).
- Maintenance and installation should only be carried out by a professional electrician.